

Unitary Air Handlers & Coils



DMVE

Air Handler

Multi-Position, Variable-Speed,
Inverter-Tuned

COMFORTABLE LIMITED WARRANTY* PROTECTION



* Complete warranty details available from your local dealer/contractor or at www.daikincomfort.com. To receive the 12-Year Parts Limited Warranty, online registration must be completed within 60 days of installation. Online registration is not required in California or Québec. The duration of warranty coverage in Texas and Florida differs in some cases.

Standard Features

- » Electronic Expansion Valve (EEV) for cooling and heat pump applications
- » Variable-speed ECM indoor blower motor
- » Compatible with the Daikin *One+* and Daikin *One* touch smart thermostats and other Daikin communicating equipment
- » Provides constant CFM over a wide range of static pressure conditions independent of duct system
- » CFM indicator
- » Thermostat provides adjustable low CFM for efficient fan-only operation
- » All-aluminum evaporator coil
- » Fault recall of six most recent faults
- » Improved humidity and comfort control compared to units without ECM or EEV
- » 3 kW – 25 kW electric heater kits
- » Horizontal or vertical configuration capabilities
- » 21 inch depth for easier attic access
- » DecaBDE-free thermoplastic drain pan with secondary drain connections
- » Screw-less sides and back helps to reduce condensation when installed in humid locations
- » Foil-faced insulation covers the internal casing to reduce cabinet condensation
- » Tool-less filter access
- » AHRI certified and ETL listed

The Daikin brand DMVE Multi-Position, Variable-Speed, Inverter-Tuned Air Handler is part of our family of communicating units and is designed specifically for use with 18 and 20 SEER inverter outdoor equipment. This unit's ECM indoor blower motor allows for a soft start and stop, offering a quiet, efficient operation while helping to reduce the cold blast of air upon heating start-up.



Model	Nominal Capacity Range (tons)	Voltage	MCA	MOP	Dimensions			Connection Size		Ship Weight (lbs)
					W"	D"	H"	Liquid"	Suction"	
DMVE24BP1400	2	208/230	4.9/4.9	15/15	17½	21	53⅞	¾"	¾"	115
DMVE36CP1400	3	208/230	6.5/6.5	15/15	21	21	53⅞	¾"	¾"	140
DMVE48DP1400	4	208/230	8.6/8.6	15/15	24½	21	53⅞	¾"	¾"	150
DMVE60DP1400	5	208/230	8.6/8.6	15/15	24½	21	58	¾"	¾"	167

The manufacturing entity reserves the right to discontinue, or change at any time, specifications or designs without notice or without incurring obligations.



DAIKIN *ONE+*
SMART THERMOSTAT



DAIKIN *ONE* TOUCH
SMART THERMOSTAT

COMFORTABLE LIMITED WARRANTY* PROTECTION



* Complete warranty details available from your local dealer/contractor or at www.daikincomfort.com. To receive the 12-Year Parts Limited Warranty, online registration must be completed within 60 days of installation. Online registration is not required in California or Québec. The duration of warranty coverage in Texas and Florida differs in some cases.

Daikin Fit - DFVE

Air Handler

Multi-Position, Variable-Speed

Standard Features

- » Electronic Expansion Valve (EEV) for cooling and heat pump applications.
- » 7mm evaporator coil tube size
- » Variable-speed ECM blower motor
- » Compatible with the Daikin *One+* and Daikin *One* touch smart thermostats and other Daikin communicating equipment
- » Provides constant CFM over a wide range of static pressure conditions independent of duct system
- » CFM indicator
- » Thermostat provides adjustable low CFM for efficient fan-only operation
- » All-aluminum evaporator coil
- » Fault recall of six most recent faults
- » Improved humidity and comfort control
- » AHRI certified; ETL listed
- » Cabinet air leakage less than 2.0% at 1.0 inch H₂O and 1.4% at 0.5 inch H₂O when tested in accordance with ASHRAE standard 193
- » 3 kW – 25 kW electric heater kits
- » Horizontal or vertical configuration capabilities
- » 21 inch depth for easier attic access
- » DecaBDE-free thermoplastic drain pan with secondary drain connections
- » Screw-less sides and back helps to reduce condensation when installed in humid locations
- » Foil-faced insulation covers the internal casing to reduce cabinet condensation
- » Galvanized and leather grain-embossed finish
- » Glue-less cabinet insulation retention
- » Tool-less filter access

The Daikin brand DFVE Multi-Position, Variable-Speed, Communicating Air Handler with Internal EEV is made for the Daikin *Fit* system. This unit's ECM indoor blower motor allows for a soft start and stop, offering a quiet, efficient operation.



UNITARY PRODUCTS

Model	Nominal Capacity Range (tons)	Voltage	MCA	MOP	Dimensions			Connection Size		Ship Weight (lbs)
					W"	D"	H"	Liquid"	Suction"	
DFVE24BP1400	2	208/230-1	4.9/4.9	15/15	17½	21	45	¾"	¾"	115
DFVE36CP1400	3	208/230-1	6.5/6.5	15/15	21	21	53⅞	¾"	¾"	140
DFVE42CP1400	3½	208/230-1	6.5/6.5	15/15	21	21	53⅞	¾"	¾"	140
DFVE48DP1400	4	208/230-1	6.5/6.5	15/15	24½	21	53⅞	¾"	¾"	150
DFVE60DP1400	5	208/230-1	6.5/6.5	15/15	24½	21	58	¾"	¾"	167

The manufacturing entity reserves the right to discontinue, or change at any time, specifications or designs without notice or without incurring obligations.



DAIKIN ONE+
SMART THERMOSTAT



DAIKIN ONE TOUCH
SMART THERMOSTAT

DFVE* (115V)

Air Handler

Multi-Position, Variable-Speed,
Inverter-Tuned

COMFORTABLE LIMITED WARRANTY* PROTECTION



* Complete warranty details available from your local dealer/contractor or at www.daikincomfort.com. To receive the 12-Year Parts Limited Warranty, online registration must be completed within 60 days of installation. Online registration is not required in California or Québec. The duration of warranty coverage in Texas and Florida differs in some cases.

Standard Features

- » Electronic Expansion Valve (EEV) for cooling and heat pump applications
- » Variable-speed ECM indoor blower motor
- » Compatible with the Daikin *One+* and Daikin *One* touch smart thermostats and other Daikin communicating equipment
- » Provides constant CFM over a wide range of static pressure conditions independent of duct system
- » CFM indicator
- » Thermostat provides adjustable low CFM for efficient fan-only operation
- » All-aluminum evaporator coil
- » Fault recall of six most recent faults
- » Improved humidity and comfort control compared to units without ECM or EEV
- » Horizontal or vertical configuration capabilities
- » 21 inch depth for easier attic access
- » DecaBDE-free thermoplastic drain pan with secondary drain connections
- » Screw-less sides and back helps to reduce condensation when installed in humid locations
- » Foil-faced insulation covers the internal casing to reduce cabinet condensation
- » Tool-less filter access
- » AHRI certified and ETL listed

The Daikin brand DFVE* 115V Multi-Position, Variable-Speed, Inverter-Tuned Air Handler is part of our family of communicating units and is designed specifically for use with 18 and 20 SEER inverter outdoor equipment. This unit's ECM indoor blower motor allows for a soft start and stop, offering a quiet, efficient operation while helping to reduce the cold blast of air upon heating start-up.



Model	Nominal Capacity Range (tons)	Voltage	MCA	MOP	Dimensions			Connection Size		Ship Weight (lbs)
					W"	D"	H"	Liquid"	Suction"	
DFVE24BP0400	2	115-1	4.9/4.9	15/15	17½	21	53⅞	¾"	¾"	115
DFVE36CP0400	3	115-1	6.5/6.5	15/15	21	21	53⅞	¾"	¾"	140
DFVE42CP0400	4	115-1	8.6/8.6	15/15	24½	21	53⅞	¾"	¾"	150
DFVE48DP0400	5	115-1	8.6/8.6	15/15	24½	21	58	¾"	¾"	167
DFVE60DP0400	5	115-1	7.1/10.4	15/15	24½	21	58	¾"	¾"	167

The manufacturing entity reserves the right to discontinue, or change at any time, specifications or designs without notice or without incurring obligations.



DAIKIN *ONE+*
SMART THERMOSTAT



DAIKIN *ONE TOUCH*
SMART THERMOSTAT

COMFORTABLE LIMITED WARRANTY* PROTECTION



* Complete warranty details available from your local dealer/contractor or at www.daikincomfort.com. To receive the 12-Year Parts Limited Warranty, online registration must be completed within 60 days of installation. Online registration is not required in California or Québec. The duration of warranty coverage in Texas and Florida differs in some cases.

DMVT

Air Handler

Multi-Position, Variable-Speed

Standard Features

- » Compatible with the Daikin *One+* and Daikin *One* touch smart thermostats and other Daikin communicating equipment
- » Auto configuration of the airflow and tonnage in communicating mode
- » All-aluminum evaporator coil
- » Provides constant CFM over a wide range of static pressure conditions independent of duct system
- » CFM indicator
- » Fault recall of six most recent faults
- » Provides adjustable low CFM for efficient fan-only operation
- » Improved humidity and comfort control
- » Built-in compatibility with multi-stage heat pump and cooling applications
- » AHRI certified; ETL listed

The Daikin brand DMVT Multi-Position, Variable-Speed Air Handler is part of our family of communicating units and optimized for use with the chlorine-free refrigerant, R-410A. This unit's ECM indoor blower motor allows for a soft start and stop, which offers a quiet, efficient operation and helps reduce the cold blast of air upon heating start-up.



Model	Nominal Capacity Range (tons)	Voltage	MCA	MOP	Dimensions			Connection Size		Ship Weight (lbs)
					W"	D"	H"	Liquid"	Suction"	
DMVT24BP1400	1½	208/230-1	4.9/4.9	15/15	17½	21	45	¾"	¾"	129
DMVT30BP1400	2	208/230-1	4.9/4.9	15/15	17½	21	53½	¾"	¾"	129
DMVT36BP1400	2½	208/230-1	6.5/6.5	15/15	17½	21	49	¾"	¾"	129
DMVT36CP1400	3	208/230-1	6.5/6.5	15/15	21	21	45	¾"	¾"	153
DMVT42CP1400	3½	208/230-1	6.5/6.5	15/15	21	21	53½	¾"	¾"	153
DMVT48CP1400	4	208/230-1	6.5/6.5	15/15	21	21	53½	¾"	¾"	153
DMVT48DP1400	4	208/230-1	8.6/8.6	15/15	24½	21	49	¾"	¾"	155
DMVT60DP1400	5	208/230-1	8.6/8.6	15/15	24½	21	53½	¾"	¾"	167

The manufacturing entity reserves the right to discontinue, or change at any time, specifications or designs without notice or without incurring obligations.



DAIKIN ONE+
SMART THERMOSTAT



DAIKIN ONE TOUCH
SMART THERMOSTAT

UNITARY PRODUCTS

AMST

Air Handler

Multi-Position, Multi-Speed

COMFORTABLE LIMITED
WARRANTY* PROTECTION



* Complete warranty details available from your local dealer/contractor or at www.daikincomfort.com. To receive the 12-Year Parts Limited Warranty, online registration must be completed within 60 days of installation. Online registration is not required in California or Québec. The duration of warranty coverage in Texas and Florida differs in some cases.

Standard Features

- » Maximum four low-voltage wires required for operation in communicating mode
- » Auto configuration of the airflow and tonnage in communicating mode
- » Factory-installed inverter-tuned thermal expansion valves
- » Direct Drive ECM indoor blower motor
- » All-aluminum evaporator coil
- » Provides constant CFM over a wide range of static pressure conditions independent of duct system
- » Provides adjustable low speed for efficient fan-only operation
- » CFM and diagnostic indicator with front-panel sight glass
- » Galvanized leather grain-embossed finish
- » Foil-faced insulation covers the entire blower case to reduce operating sound and cabinet condensation
- » Multi-position installation: upflow or downflow or horizontal
- » AHRI certified; ETL listed

The AMST Multi-Position, 9-Speed ECM air handler with internal TXV is optimized for single-stage AC and HP outdoor units up to 15.2 SEER2.



Model	Nominal Capacity Range (tons)	Voltage	MCA	MOP	Dimensions			Connection Size		Ship Weight (lbs)
					W"	D"	H"	Liquid"	Suction"	
AMST24BU1400**	2	208/230-1	5.8	15	17½	21	45	¾	¾	112
AMST30BU1400**	2½	208/230-1	5.6	15	17½	21	53½	¾	¾	129
AMST36BU1400**	3	208/230-1	5.6	15	17½	21	53	¾	¾	129
AMST36CU1400**	3	208/230-1	7.1	15	21	21	49	¾	¾	153
AMST42CU1400**	3½	208/230-1	5.9	15	21	21	53½	¾	¾	153
AMST48CU1400**	4	208/230-1	7.1	15	21	21	58	¾	¾	153
AMST48DU1400**	4	208/230-1	8.6	15	24½	21	53	¾	¾	155
AMST60DU1400**	5	208/230-1	8.6	15	24½	21	58	¾	¾	167

The manufacturing entity reserves the right to discontinue, or change at any time, specifications or designs without notice or without incurring obligations.

COMFORTABLE LIMITED WARRANTY* PROTECTION



* Complete warranty details available from your local dealer/contractor or at www.daikincomfort.com. To receive the 12-Year Parts Limited Warranty, online registration must be completed within 60 days of installation. Online registration is not required in California or Québec. The duration of warranty coverage in Texas and Florida differs in some cases.

MBVK

Air Handler Modular Blower

Standard Features

- » Compatible with the Daikin *One+* and Daikin *One* touch smart thermostats and other Daikin communicating equipment
- » Variable-speed ECM blower motor
- » Integrated communicating ComfortBridge™ Technology
- » Commissioning and diagnostics via on board Bluetooth with the CoolCloud™ phone and tablet application
- » Advanced configuration of the airflow and tonnage in communicating mode
- » Provides constant CFM over a wide range of static pressure conditions independent of duct system
- » CFM indicator
- » Fault recall of six most recent faults
- » Provides adjustable low CFM for efficient fan-only operation
- » Improved humidity and comfort control
- » Built-in compatibility with multi-stage heat pump and cooling applications
- » UL 60335 2-40 Compliant
- » AHRI certified; ETL listed

The Daikin brand MBVK modular blower are tailor made for exceptional energy efficiency. The MBVK's ECM indoor blower motor assemblies increase both installation and application flexibility. Can be matched with cased coils for upflow, downflow, and horizontal applications.



Model	Voltage-Phase	MCA	MOP	Dimensions			Ship Weight (lbs)
				W"	D"	H"	
MBVK12BP1X00	208/230-1	4.3	15	17½	21	26	67
MBVK16CP1X00	208/230-1	6.3	15	21	21	30	80
MBVK20DP1X00	208/230-1	5.8	15	24½	21	30	86

The manufacturing entity reserves the right to discontinue, or change at any time, specifications or designs without notice or without incurring obligations.



DAIKIN ONE+
SMART THERMOSTAT



DAIKIN ONE TOUCH
SMART THERMOSTAT

UNITARY PRODUCTS

AWST

Air Handler

Multi-Position, Variable-Speed

COMFORTABLE LIMITED
WARRANTY* PROTECTION



* Complete warranty details available from your local dealer/contractor or at www.daikincomfort.com. To receive the 12-Year Parts Limited Warranty, online registration must be completed within 60 days of installation. Online registration is not required in California or Québec. The duration of warranty coverage in Texas and Florida differs in some cases.

Standard Features

- » AWST Models: Equipped with a fully adjustable TXV
- » Installation Options - Wall Mount
- » Direct-drive
- » Multi-speed motors allows air volume variation for heating/cooling
- » Sequence-controlled
- » Rust-resistant nickel chromium heating elements of 3/ 5/ 8 and 10 kW
- » Aluminum tubing coils on all models
- » Cabinet air leakage less than 2.0% at 1.0 inch H₂O when tested in accordance with ASHRAE standard 19

The Daikin brand AWST air handler is designed to be vertically wall- or stud-mounted. This unit is equipped with a fully adjustable TXV and direct-drive, multi-speed motor. The AWST is housed in a fully insulated, galvanized-steel cabinet. Supports 2023 DOE Energy Efficiency Standards.



Model	Nominal Capacity Range (tons)	Electric Heat (kW)	Voltage/Phase	MCA	MOP	Dimensions			Connection Size		Ship Weight (lbs)
						W"	D"	H"	Liquid"	Suction"	
AWST18SU1403 AA	1½	3	208/230-1	17/18.9	20/20	20⅞	16⅞	36	¾	⅝	84
AWST18SU1405 AA	1½	5	208/230-1	24.9/28	25/30	20⅞	16⅞	36	¾	⅝	84
AWST18SU1408 AA	1½	8	208/230-1	36/41.3	40/45	20⅞	16⅞	36	¾	⅝	84
AWST24SU1405 AA	2	5	208/230-1	24.9/28	25/30	20⅞	16⅞	36	¾	⅝	84
AWST24SU1408 AA	2	8	208/230-1	36/41.3	40/45	20⅞	16⅞	36	¾	⅝	84
AWST24SU1410 AA	2	10	208/230-1	47.5/54	50/60	20⅞	16⅞	36	¾	⅝	84
AWST30LU1405 AA	2½	5	208/230-1	26/29.8	30/30	24	21	36	¾	¾	109
AWST30LU1408 AA	2½	8	208/230-1	37.8/43	40/45	24	21	36	¾	¾	109
AWST30LU1410 AA	2½	10	208/230-1	49/55.8	50/60	24	21	36	¾	¾	109
AWST36LU1405 AA	3	5	208/230-1	26/29.8	30/30	24	21	36	¾	¾	109
AWST36LU1408 AA	3	8	208/230-1	37.8/43	40/45	24	21	36	¾	¾	109
AWST36LU1410 AA	3	10	208/230-1	49/55.8	50/60	24	21	36	¾	¾	109

The manufacturing entity reserves the right to discontinue, or change at any time, specifications or designs without notice or without incurring obligations.

COMFORTABLE LIMITED WARRANTY* PROTECTION



* Complete warranty details available from your local dealer/contractor or at www.daikincomfort.com. To receive the 12-Year Parts Limited Warranty, online registration must be completed within 60 days of installation. Online registration is not required in California or Québec. The duration of warranty coverage in Texas and Florida differs in some cases.

AWSF

Air Handler Wall-Mount

Standard Features

- » AWSF Models: Equipped with a Check Flowrator
- » Direct-drive, multi-speed motors allows air volume variation for heating/cooling
- » Sequence-controlled, rust-resistant nickel chromium heating elements of 5, 8, and 10 kW
- » Aluminum tubing coils on all models
- » Cabinet air leakage less than 2.0% at 1.0 inch H₂O when tested in accordance with ASHRAE standard 193
- » Cabinet air leakage less than 1.4% at 0.5 inch H₂O when tested in accordance with ASHRAE standard 193
- » Factory-installed pull-type disconnect
- » Thermoplastic drain pan with bottom primary and secondary drain connections
- » Built-in filter rack (filter included)
- » Large chassis (2½- and 3-ton units) – front return only
- » Small chassis (1½- and 2-ton units) – front or bottom return
- » Wall-hanging bracket provided
- » AHRI Certified; ETL Listed

The Daikin brand AWSF Air Handlers are designed to be vertically wall or stud mounted. The AWSF is housed in a fully insulated, galvanized-steel cabinet.



Model	Nominal Capacity Range (tons)	Electric Heat (kW)	Voltage-Phase	MCA	MOP	Dimensions			Connection Size		Ship Weight (lbs)
						W"	D"	H"	Liquid"	Suction"	
AWSF18SU1605	1½	5	208/230	24.9/28	25/30	20⅜	16⅞	36	⅝	⅝	84
AWSF18SU1608	1½	8	208/230	36/41.3	40/45	20⅜	16⅞	36	⅝	⅝	84
AWSF24SU1605	2	5	208/230	24.9/28	25/30	20⅜	16⅞	36	⅝	⅝	84
AWSF24SU1608	2	8	208/230	36/41.3	40/45	20⅜	16⅞	36	⅝	⅝	84
AWSF24SU1610	2	10	208/230	46.6/53	50/60	20⅜	16⅞	36	⅝	⅝	84
AWSF30LU1605	2½	5	208/230	26/29.8	30/30	24	21	36	⅝	¾	109
AWSF30LU1608	2½	8	208/230	37.7/43	40/45	24	21	36	⅝	¾	109
AWSF30LU1610	2½	10	208/230	48/54.8	50/60	24	21	36	⅝	¾	109
AWSF36LU1605	3	5	208/230	26/29.8	30/30	24	21	36	⅝	¾	109
AWSF36LU1608	3	8	208/230	37.7/43	40/45	24	21	36	⅝	¾	109
AWSF36LU1610	3	10	208/230	48/54.8	50/60	24	21	36	⅝	¾	109

The manufacturing entity reserves the right to discontinue, or change at any time, specifications or designs without notice or without incurring obligations.

ACSF

Air Handler Ceiling-Mount

COMFORTABLE LIMITED
WARRANTY* PROTECTION

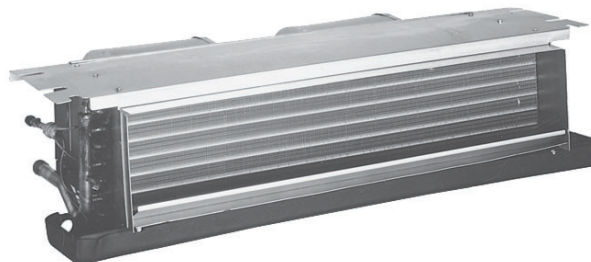


* Complete warranty details available from your local dealer/contractor or at www.daikincomfort.com. To receive the 12-Year Parts Limited Warranty, online registration must be completed within 60 days of installation. Online registration is not required in California or Québec. The duration of warranty coverage in Texas and Florida differs in some cases.

Standard Features

- » All-Aluminum tube/aluminum fin coil
- » Direct-drive, resilient-mount, multi-speed motor
- » Sequence-controlled and rust-resistant nickel chromium heating elements
- » AHRI Certified; ETL Listed
- » Primary/secondary drain connection in a high-temperature plastic drain pan
- » Suitable for free-return installation (non-ducted return air)
- » Galvanized-steel construction
- » Factory-installed pull-type disconnect
- » Easy service access of 5, 6, 8 and 10 kW
- » High-efficiency evaporator coil
- » Quiet operation

The Daikin brand ACSF Electric Heat Air Handler is designed to be ceiling-mounted. This unit features a check flowwater and direct-drive, resilient-mount, multi-speed motor. The ACSF has galvanized-steel construction and quiet operation.



Model	Nominal Capacity Range (tons)	Electric Heat (kW)	Voltage (VAC)	MCA	MOP	Dimensions			Connection Size		Ship Weight (lbs)
						W"	D"	H"	Liquid	Suction	
ACSF18MN1605AA	1½	5	208/230	28.5/25	30/30	43¼	21	10	¾	¾	69
ACSF18MN1608AA	1½	8	208/230	44/38.6	45/40	43¼	21	10	¾	¾	69
ACSF24LN1605AA	2	5	208/230	28.5/25	30/30	49¼	21	10	¾	¾	79
ACSF24LN1606AA	2	6	208/230	34/29.6	35/30	49¼	21	10	¾	¾	79
ACSF24LN1608AA	2	8	208/230	44/38.6	45/40	49¼	21	10	¾	¾	79
ACSF24LN1610AA	2	10	208/230	54.6/48.0	60/50	49¼	21	10	¾	¾	79
ACSF30LN1605AA	2½	5	208/230	28.5/ 25	30/30	49¼	21	10	¾	¾	79
ACSF30LN1606AA	2½	6	208/230	34/29.6	35/30	49¼	21	10	¾	¾	79
ACSF30LN1608AA	2½	8	208/230	44/38.6	45/40	49¼	21	10	¾	¾	79
ACSF30LN1610AA	2½	10	208/230	54.6/48	60/50	49¼	21	10	¾	¾	79

The manufacturing entity reserves the right to discontinue, or change at any time, specifications or designs without notice or without incurring obligations.

COMFORTABLE LIMITED WARRANTY* PROTECTION



* Complete warranty details available from your local dealer/contractor or at www.daikincomfort.com. To receive the 12-Year Parts Limited Warranty, online registration must be completed within 60 days of installation. Online registration is not required in California or Québec. The duration of warranty coverage in Texas and Florida differs in some cases.

CAPEA / CAPE Cased Indoor Coil

Standard Features

- » Compatible with Daikin *One+* and Daikin *One* touch smart thermostats and other Daikin communicating equipment
- » Electronic Expansion Valve (EEV) models feature
 - Cooling and heat pump applications
 - Fault recall of six most recent faults
- » All-aluminum evaporator coil
 - 7mm evaporator coil tube size (CAPEA)
- » Galvanized, leather grain-embossed finish
- » Rust-resistant, high-temperature, thermoplastic drain pans feature a low water-retention design
- » Upflow/downflow configuration
- » 21" depth for easier attic access
- » Foil-faced insulation covers the internal casing to reduce cabinet condensation
- » Split-seam front for easy access (CAPE only)
- » DecaBDE-free UV-resistant drain pan
- » UV-resistant drain pan
- » AHRI certified; ETL listed

The Daikin brand All-aluminum CAPEA and CAPE Cased Upflow/Downflow Indoor Coils are made for the Daikin *Fit* system. This unit features aluminum tubing and corrugated aluminum fin coils and rust-resistant, high-temperature, thermoplastic drain pans. The CAPEA and CAPE cabinets are painted nickel gray.



CAPEA- Utilized by DX6VS & DZ6VS

Model	Dimensions			Nominal Capacity Range (tons)	Connection Size		Ship Weight (lbs)
	W"	D"	H"		Liquid"	Suction"	
CAPEA1818B4	17½	21	18	1½ - 2	¾	¾	43
CAPEA1818C4	21	21	18	1½ - 2	¾	¾	45
CAPEA2422B4	17½	21	22	2 - 2½	¾	¾	48
CAPEA2422C4	21	21	22	2 - 2½	¾	¾	51
CAPEA3026B4	17½	21	26	3	¾	7/8	54
CAPEA3026C4	21	21	26	3	¾	7/8	57
CAPEA3026D4	24½	21	26	3	¾	7/8	62
CAPEA4830C4	21	21	30	3½ - 4	¾	7/8 or 1½	67
CAPEA6030D4	24½	21	30	4-5	¾	7/8 or 1½	76

The manufacturing entity reserves the right to discontinue, or change at any time, specifications or designs without notice or without incurring obligations.

CAPE- Utilized by DX6VS only

Model	Dimensions			Nominal Capacity Range (tons)	Connection Size		Ship Weight (lbs)
	W"	D"	H"		Liquid"	Suction"	
CAPE4860C4	21	21½	30	3½ - 4	¾	7/8	71
CAPE4860D4	24½	21½	30	3½ - 4	¾	7/8	73
CAPE4961C4	21	21½	30	4 - 5	¾	7/8	78
CAPE4961D4	24½	21½	30	4 - 5	¾	7/8	80

The manufacturing entity reserves the right to discontinue, or change at any time, specifications or designs without notice or without incurring obligations.



DAIKIN ONE+
SMART THERMOSTAT



DAIKIN ONE TOUCH
SMART THERMOSTAT

CAPT

Cased Indoor Coil

COMFORTABLE LIMITED WARRANTY* PROTECTION



* Complete warranty details available from your local dealer/contractor or at www.daikincomfort.com. To receive the 12-Year Parts Limited Warranty, online registration must be completed within 60 days of installation. Online registration is not required in California or Québec. The duration of warranty coverage in Texas and Florida differs in some cases.

Standard Features

- » Internal factory-installed thermal expansion valves (TXV) for cooling and heat pump applications
- » Rust-resistant, high-temperature, thermoplastic drain pans feature a low water-retention design
- » All-aluminum evaporator coil
- » Rifled aluminum tubing and corrugated aluminum fin coil
- » Galvanized, leather grain-embossed finish
- » 21" depth for easier attic access
- » Upflow/downflow configuration
- » Foil-faced insulation covers the internal casing to reduce cabinet condensation
- » High-quality post-paint cabinet
- » Split-seam front for easy access
- » AHRI certified; ETL listed

The Daikin brand All-aluminum CAPT Cased coils with TXV option are made for split system air conditioners and heat pumps. This unit features aluminum tubing and corrugated aluminum fin coils and rust-resistant, high-temperature, thermoplastic drain pans. The CAPT cabinet is painted nickel gray.



Model	Cabinet Dimensions			Nominal Capacity Range (tons)	Connection Size		Ship Weight (lbs)
	W"	D"	H"		Liquid"	Suction"	
CAPT4961C4	21	21	30	3 - 5	3/8	7/8	73
CAPT4961D4	24 1/2	21	30	3 - 5	3/8	7/8	76

The manufacturing entity reserves the right to discontinue, or change at any time, specifications or designs without notice or without incurring obligations.

COMFORTABLE LIMITED WARRANTY* PROTECTION



* Complete warranty details available from your local dealer/contractor or at www.daikincomfort.com. To receive the 12-Year Parts Limited Warranty, online registration must be completed within 60 days of installation. Online registration is not required in California or Québec. The duration of warranty coverage in Texas and Florida differs in some cases.

CAPTA

Cased Indoor Coil

Standard Features

- » Internal factory-installed thermal expansion valves (TXV) for cooling and heat pump applications
- » Rust-resistant high-temperature thermoplastic drain pans feature a low water-retention design
- » All-aluminum evaporator coil
- » Check flowrate for cooling and heat pump applications
- » Rifled aluminum tubing and corrugated aluminum fin coil
- » Galvanized and leather grain-embossed finish
- » 21-inch depth for easier attic access
- » Upflow/downflow configuration
- » Foil-faced insulation covers the internal casing to reduce cabinet condensation
- » High-quality post-paint cabinet
- » AHRI certified; ETL listed

The Daikin brand All-aluminum CAPTA Cased Upflow/Downflow Cased coils with factory installed TXV are made for split system air conditioners and heat pumps. This unit features aluminum tubing, corrugated aluminum fin coils and rust-resistant, high temperature, thermoplastic drain pans. The CAPTA cabinet is painted nickel gray.



Model	Cabinet Dimensions			Nominal Tons	Connection Size		Ship Weight (lbs)
	W"	D"	H"		Liquid"	Suction"	
CAPTA1818A4	14	21	18	1½	¾	¾	36
CAPTA1818B4	17½	21	18	1½	¾	¾	41
CAPTA2422A4	14	21	22	2	¾	¾	44
CAPTA2422B4	17½	21	22	2	¾	¾	48
CAPTA2422C4	21	21	22	2	¾	¾	53
CAPTA3022A4	14	21	22	2½	¾	¾	44
CAPTA3022B4	17½	21	22	2½	¾	¾	48
CAPTA3022C4	21	21	22	2½	¾	¾	53
CAPTA3026B4	17½	21	26	2½	¾	¾	50
CAPTA3026C4	21	21	26	2½	¾	¾	52
CAPTA3626B4	17½	21	26	3	¾	¾	54
CAPTA3626C4	21	21	26	3	¾	¾	57
CAPTA4230C4	21	21	30	3½	¾	¾	63
CAPTA4230D4	24½	21	30	23	¾	¾	66

The manufacturing entity reserves the right to discontinue, or change at any time, specifications or designs without notice or without incurring obligations.

* Complete warranty details available from your local dealer/contractor or at www.daikincomfort.com. To receive the 12-Year Parts Limited Warranty, online registration must be completed within 60 days of installation. Online registration is not required in California or Québec. The duration of warranty coverage in Texas and Florida differs in some cases.

Standard Features

- » Check flowrate for cooling and heat pump applications
- » All-aluminum evaporator coil
- » 7mm tubes designed with patented grooves to maximize heat transfer
- » Galvanized, leather grain-embossed finish
- » Rust-resistant, high-temperature, thermoplastic drain pans feature a low water-retention design
- » Upflow/downflow configuration
- » 21" depth for easier attic access
- » Foil-faced insulation covers the internal casing to reduce cabinet condensation
- » DecaBDE-free UV-resistant drain pan
- » UV-resistant drain pan
- » AHRI certified; ETL listed

The Daikin brand All-aluminum CAPFA Cased Upflow/Downflow Indoor Coils are made for split system air conditioners and heat pumps. This unit features aluminum tubing and corrugated aluminum fin coils and rust-resistant, high-temperature, thermoplastic drain pans. The CAPFA cabinet is painted nickel gray.



Model	Dimensions			Nominal Capacity Range (tons)	Connection Size		Ship Weight (lbs)
	W"	D"	H"		Liquid"	Suction"	
CAPFA1818A6	14	21	18	1½	¾	¾	33
CAPFA1818B6	17½	21	18	1½	¾	¾	38
CAPFA1818C6	21	21	18	1½	¾	¾	43
CAPFA2418A6	14	21	18	1½ - 2	¾	¾	33
CAPFA2418B6	17½	21	18	1½ - 2	¾	¾	38
CAPFA2418C6	21	21	18	1½ - 2	¾	¾	43
CAPFA2422A6	14	21	18	2	¾	¾	41
CAPFA2422B6	17½	21	22	2	¾	¾	45
CAPFA2422C6	21	21	22	2	¾	¾	50
CAPFA3022A6	14	21	22	2 - 2½	¾	¾	41
CAPFA3022B6	17½	21	22	2 - 2½	¾	¾	45
CAPFA3022C6	21	21	22	2 - 2½	¾	¾	50
CAPFA3022D6	24½	21	22	2 - 2½	¾	¾	52
CAPFA3626B6	17½	21	26	2 - 3	¾	¾	47
CAPFA3626C6	21	21	26	2 - 3	¾	¾	49
CAPFA3626D6	24½	21	26	2 - 3	¾	¾	56
CAPFA4226B6	17½	21	26	3 - 3½	¾	¾	51
CAPFA4226C6	21	21	26	3 - 3½	¾	¾	54
CAPFA4226D6	24½	21	26	3 - 3½	¾	¾	59

The manufacturing entity reserves the right to discontinue, or change at any time, specifications or designs without notice or without incurring obligations.

COMFORTABLE LIMITED WARRANTY* PROTECTION



* Complete warranty details available from your local dealer/contractor or at www.daikincomfort.com. To receive the 12-Year Parts Limited Warranty, online registration must be completed within 60 days of installation. Online registration is not required in California or Québec. The duration of warranty coverage in Texas and Florida differs in some cases.

CAPF

Cased Indoor Coil

Standard Features

- » Check flowrate for cooling and heat pump applications
- » Rifled aluminum tubing and corrugated aluminum fin coil
- » All-aluminum evaporator coil
- » Galvanized, leather grain-embossed finish
- » Rust-resistant, high-temperature, thermoplastic drain pans feature a low water-retention design
- » Upflow/downflow configuration
- » 21" depth for easier attic access
- » Foil-faced insulation covers the internal casing to reduce cabinet condensation
- » Split-seam front for easy access
- » DecaBDE-free UV-resistant drain pan
- » UV-resistant drain pan
- » AHRI certified; ETL listed

The Daikin brand All-aluminum CAPF Cased Upflow/Downflow Indoor Coils are made for split system air conditioners and heat pumps. This unit features aluminum tubing and corrugated aluminum fin coils and rust-resistant, high-temperature, thermoplastic drain pans. The CAPF cabinet is painted nickel gray.



Model	Dimensions			Nominal Capacity Range (tons)	Connection Size		Ship Weight (lbs)
	W"	D"	H"		Liquid"	Suction"	
CAPF3137B6	17½	21	30	2½ - 3	¾	¾	53
CAPF3743C6	21	21	30	2½ - 3½	¾	¾	63
CAPF3743D6	24½	21	30	2½ - 3½	¾	¾	75
CAPF4860C6	21	21	30	3 - 5	¾	¾	65
CAPF4860D6	24½	21	30	3 - 5	¾	¾	68
CAPF4961C6	21	21	30	3½ - 5	¾	¾	73
CAPF4961D6	24½	21	30	3½ - 5	¾	¾	76

The manufacturing entity reserves the right to discontinue, or change at any time, specifications or designs without notice or without incurring obligations.

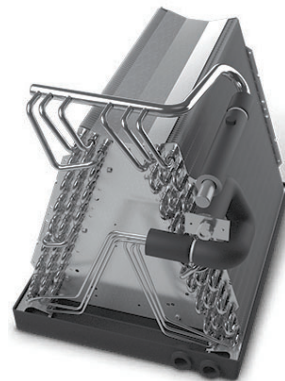
UNITARY PRODUCTS

* Complete warranty details available from your local dealer/contractor or at www.daikincomfort.com. To receive the 12-Year Parts Limited Warranty, online registration must be completed within 60 days of installation. Online registration is not required in California or Québec. The duration of warranty coverage in Texas and Florida differs in some cases.

Standard Features

- » Check flowrate for cooling and heat pump applications
- » All-aluminum evaporator coil
- » Rifled aluminum tubing and corrugated aluminum fin coil
- » 21" depth for easier attic access
- » Upflow/downflow configuration
- » Rust-resistant, high-temperature, thermoplastic drain pans feature a low water-retention design
- » UV-resistant drain pan
- » AHRI certified; ETL listed

The Daikin brand All-aluminum CAUFA Uncased Upflow/Downflow Indoor Coils are made for split system air conditioners and heat pumps. This coil features aluminum tubing and corrugated aluminum fins and rust-resistant, high-temperature, thermoplastic drain pan.



Model	Dimensions			Nominal Capacity Range (tons)	Connection Size		Ship Weight (lbs)
	W"	D"	H"		Liquid"	Suction"	
CAUFA1818A6	12½	20	14¾	1½	¾	¾	18
CAUFA1818B6	16	20	14½	1½	¾	¾	20
CAUFA1818C6	19.5	20	14¼	1½	¾	¾	26
CAUFA2418A6	12½	20	14¾	1½ - 2	¾	¾	18
CAUFA2418B6	16	20	14½	1½ - 2	¾	¾	20
CAUFA2418C6	19½	20	14¼	1½ - 2	¾	¾	26
CAUFA2422A6	12½	20	18	2	¾	¾	26
CAUFA2422B6	16	20	17¾	2	¾	¾	28
CAUFA2422C6	19½	20	17½	2	¾	¾	30
CAUFA3022A6	12½	20	18	2 - 2½	¾	¾	26
CAUFA3022B6	16	20	17¾	2 - 2½	¾	¾	28
CAUFA3022C6	19½	20	17½	2 - 2½	¾	¾	30
CAUFA3022D6	23	20	17¼	2 - 2½	¾	¾	32
CAUFA3626B6	16	20	21	2 - 3	¾	¾	30
CAUFA3626C6	19½	20	20¾	2 - 3	¾	¾	31
CAUFA3626D6	23	20	20¾	2 - 3	¾	¾	35
CAUFA4226B6	16	20	24¾	3 - 3½	¾	¾	28
CAUFA4226C6	19½	20	24	3 - 3½	¾	¾	30
CAUFA4226D6	23	20	23¾	3 - 3½	¾	¾	33

The manufacturing entity reserves the right to discontinue, or change at any time, specifications or designs without notice or without incurring obligations.

COMFORTABLE LIMITED WARRANTY* PROTECTION



* Complete warranty details available from your local dealer/contractor or at www.daikincomfort.com. To receive the 12-Year Parts Limited Warranty, online registration must be completed within 60 days of installation. Online registration is not required in California or Québec. The duration of warranty coverage in Texas and Florida differs in some cases.

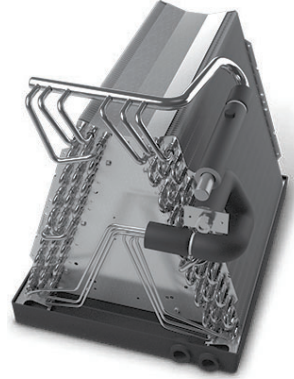
CAUF

Uncased Indoor Coil

Standard Features

- » Check flowrate for cooling and heat pump applications
- » All-aluminum evaporator coil
- » Rifled aluminum tubing and corrugated aluminum fin coil
- » 21" depth for easier attic access
- » Upflow/downflow configuration
- » Rust-resistant, high-temperature, thermoplastic drain pans feature a low water-retention design
- » UV-resistant drain pan
- » AHRI certified; ETL listed

The Daikin brand All-aluminum CAUF Uncased Upflow/Downflow Indoor Coils are made for split system air conditioners and heat pumps. This coil features aluminum tubing and corrugated aluminum fins and rust-resistant, high-temperature, thermoplastic drain pan.



Model	Dimensions			Nominal Capacity Range (tons)	Connection Size		Ship Weight (lbs)
	W"	D"	H"		Liquid"	Suction"	
CAUF3137B6	16½	20⅞	27	2½ - 3	¾	¾	53
CAUF3743C6	20	20⅞	28⅞	2½ - 3½	¾	¾	46
CAUF3743D6	23	20⅞	27¾	2½ - 3½	¾	¾	43
CAUF4860C6	20	20⅞	28	3 - 5	¾	¾	48
CAUF4860D6	23	20⅞	28	3 - 5	¾	¾	39
CAUF4961C6	20	20⅞	28	3½ - 5	¾	¾	54
CAUF4961D6	23	20⅞	27	3½ - 5	¾	¾	59

The manufacturing entity reserves the right to discontinue, or change at any time, specifications or designs without notice or without incurring obligations.

UNITARY PRODUCTS

* Complete warranty details available from your local dealer/contractor or at www.daikincomfort.com. To receive the 12-Year Parts Limited Warranty, online registration must be completed within 60 days of installation. Online registration is not required in California or Québec. The duration of warranty coverage in Texas and Florida differs in some cases.

Standard Features

- » Electronic Expansion Valve (EEV) models feature
 - Compatibility with Daikin *One+* and Daikin *One* touch smart thermostats and other Daikin communicating equipment
 - Cooling and heat pump applications
 - Fault recall of six most recent faults
- » All-aluminum evaporator coil
- » Galvanized, leather grain-embossed finish
- » Rust-resistant, high-temperature, thermoplastic drain pans feature a low water-retention design
- » Dedicated Horizontal configuration
- » 21" depth for easier attic access
- » Foil-faced insulation covers the internal casing to reduce cabinet condensation
- » UV-resistant drain pan
- » Split-seam front for easy access
- » AHRI certified; ETL listed

The Daikin brand All-aluminum CHPE Cased Horizontal "A" Coils are made for the Daikin *Fit* air conditioner system. Each coil is made of quality galvanized steel with a painted, leather grain-embossed finish. This cabinet is painted Architectural Gray.



CHPE - Utilized by DX6VS only

Model	Cabinet Dimensions			Nominal Capacity Range (tons)	Connection Size		Ship Weight (lbs)
	W"	D"	H"		Liquid"	Suction"	
CHPE2430B4	21 $\frac{1}{8}$	26	17 $\frac{1}{2}$	1 $\frac{1}{2}$	$\frac{3}{8}$	$\frac{3}{4}$	56
CHPE3636B4	21 $\frac{1}{8}$	26	17 $\frac{1}{2}$	2 - 3	$\frac{3}{8}$	$\frac{3}{4}$	59
CHPE3642C4	21 $\frac{1}{8}$	26	21	2 - 3	$\frac{3}{8}$	$\frac{3}{4}$	62
CHPE3743C4	21 $\frac{1}{8}$	26	21	3 - 4	$\frac{3}{8}$	$\frac{7}{8}$	68
CHPE3743D4	21 $\frac{1}{8}$	26	24 $\frac{1}{2}$	3 - 3 $\frac{1}{2}$	$\frac{3}{8}$	$\frac{7}{8}$	72
CHPE4860D4	21 $\frac{1}{8}$	26	24 $\frac{1}{2}$	4 - 5	$\frac{3}{8}$	$\frac{7}{8}$	79

The manufacturing entity reserves the right to discontinue, or change at any time, specifications or designs without notice or without incurring obligations.



DAIKIN **ONE+**
SMART THERMOSTAT



DAIKIN **ONE TOUCH**
SMART THERMOSTAT

COMFORTABLE LIMITED WARRANTY* PROTECTION



* Complete warranty details available from your local dealer/contractor or at www.daikincomfort.com. To receive the 12-Year Parts Limited Warranty, online registration must be completed within 60 days of installation. Online registration is not required in California or Québec. The duration of warranty coverage in Texas and Florida differs in some cases.

CHPF

Cased Indoor Coil

Standard Features

- » Check flowrate for cooling and heat pump applications
- » All-aluminum evaporator coil
- » Rust-resistant, high-temperature, thermoplastic drain pans feature a low water-retention design
- » Galvanized, leather grain-embossed finish
- » Horizontal configuration
- » 21" depth for easier attic access
- » Foil-faced insulation covers the internal casing to reduce cabinet condensation
- » UV-resistant drain pan
- » Split-seam front for easy access
- » AHRI certified; ETL listed

The Daikin brand All-aluminum CHPF Cased Horizontal "A" Coils are made for split system air conditioners and heat pumps. Each coil is made of quality galvanized steel with a painted, leather grain-embossed finish. This cabinet is painted Architectural Gray.



Model	Cabinet Dimensions			Nominal Capacity Range (tons)	Connection Size		Ship Weight (lbs)
	W"	D"	H"		Liquid"	Suction"	
CHPF3636B6	21 $\frac{1}{8}$	26	17 $\frac{1}{2}$	1 $\frac{1}{2}$ - 3	$\frac{3}{8}$	$\frac{3}{4}$	50
CHPF3642C6	21 $\frac{1}{8}$	26	21	2 - 3 $\frac{1}{2}$	$\frac{3}{8}$	$\frac{3}{4}$	63
CHPF3743C6	21 $\frac{1}{8}$	26	21	2 - 3 $\frac{1}{2}$	$\frac{3}{8}$	$\frac{7}{8}$	63
CHPF4860D6	21 $\frac{1}{8}$	26	24 $\frac{1}{2}$	3 - 5	$\frac{3}{8}$	$\frac{7}{8}$	77

The manufacturing entity reserves the right to discontinue, or change at any time, specifications or designs without notice or without incurring obligations.

UNITARY PRODUCTS

CHPT / CHPTA

Cased Horizontal Indoor Coils

COMFORTABLE LIMITED WARRANTY* PROTECTION



* Complete warranty details available from your local dealer/contractor or at www.daikincomfort.com. To receive the 12-Year Parts Limited Warranty, online registration must be completed within 60 days of installation. Online registration is not required in California or Québec. The duration of warranty coverage in Texas and Florida differs in some cases.

Standard Features

- » Check flowrate for cooling and heat pump applications
- » All-aluminum evaporator coil
- » Rifled aluminum tubing and corrugated aluminum fin coil
- » 21" depth for easier attic access
- » Upflow/downflow configuration
- » Rust-resistant, high-temperature, thermoplastic drain pans feature a low water-retention design
- » UV-resistant drain pan
- » AHRI certified; ETL listed

The Daikin brand All-aluminum CHPT/CHPTA Cased Horizontal "A" Coils with factory installed TXV are made for split system air conditioners and heat pumps. This unit features aluminum tubing, corrugated aluminum fin coils and rust-resistant, high temperature, thermoplastic drain pans. The CHPT/CHPTA cabinet is painted nickel gray.



Model	Dimensions			Nominal Capacity Range (tons)	Connection Size		Ship Weight (lbs)
	W"	D"	H"		Liquid"	Suction"	
CHPTA1822A4	22"	21"	14"	1½	¾"	¾"	48
CHPTA1822B4	22"	21"	17½"	1½	¾"	¾"	52
CHPTA2426B4	26"	21"	17½"	2	¾"	7⁄8"	57
CHPTA2426C4	26"	21"	21"	2	¾"	7⁄8"	59
CHPTA3026B4	26"	21"	17½"	2½	¾"	7⁄8"	61
CHPTA3026C4	26"	21"	21"	2½	¾"	7⁄8"	64
CHPTA3630B4	30"	21"	17½"	3	¾"	7⁄8"	66
CHPTA3630C4	30"	21"	21"	3	¾"	7⁄8"	70
CHPT4860D4**	26"	21½"	24½"	3½ - 5	¾"	7⁄8"	81

Note: For a properly matched system and piston sizing information, refer to Daikin piston kit chart of the corresponding Daikin outdoor unit.

COMFORTABLE LIMITED WARRANTY* PROTECTION



* Complete warranty details available from your local dealer/contractor or at www.daikincomfort.com. To receive the 12-Year Parts Limited Warranty, online registration must be completed within 60 days of installation. Online registration is not required in California or Québec. The duration of warranty coverage in Texas and Florida differs in some cases.

CSCF

Horizontal Slab Indoor Coil

Standard Features

- » Check flowrater for cooling and heat pump applications
- » All-aluminum evaporator coil
- » Rust-resistant, high-temperature, thermoplastic drain pan with secondary drain connection
- » Foil-faced insulation covers the internal casing to reduce cabinet condensation
- » Compact, versatile, right or left horizontal position
- » Copper sweat connections
- » UV-resistant drain pan
- » AHRI certified; ETL listed

The Daikin brand CSCF Horizontal Slab Evaporator Coils are made for split system air conditioners and heat pumps. This unit features a check flowrater expansion device and rust-resistant, high-temperature, thermoplastic drain pan. Each coil's cabinet has a quality, galvanized-steel finish.



Model	Cabinet Dimensions			Nominal Capacity Range (tons)	Connection Size		Ship Weight (lbs)
	W"	D"	H"		Liquid"	Suction"	
CSCF1824N6	25½	12	25	1½ - 2	¾	¾	43
CSCF3036N6	33½	12	25	1½ - 2½	¾	¾	53
CSCF3642N6	39½	12	25	2½ - 3½	¾	¾	43
CSCF4860N6	39½	12	25	3 - 5	¾	¾	60

The manufacturing entity reserves the right to discontinue, or change at any time, specifications or designs without notice or without incurring obligations.

UNITARY PRODUCTS